

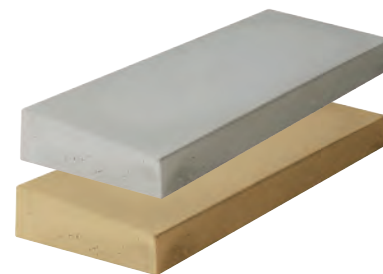
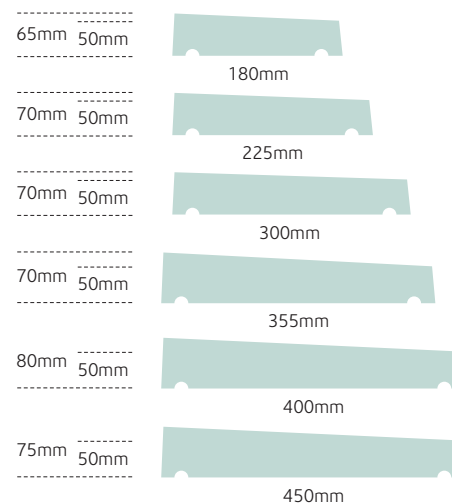
Copings

Dale Coping & Edging

Ideal as an edging stone or for finishing off a wall, available in Welsh Slate.

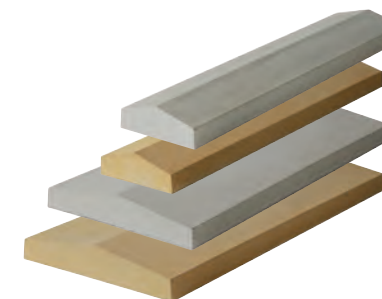
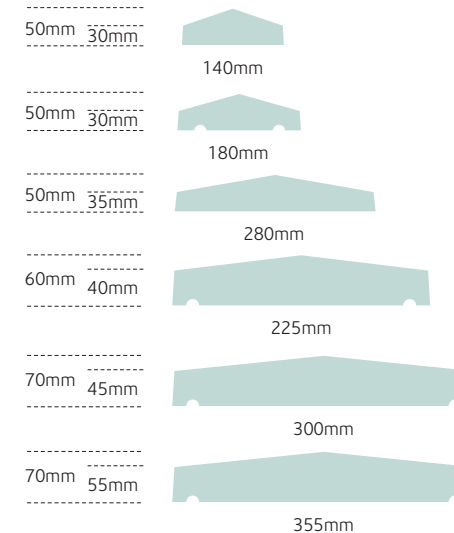


DALE COPING
525 x 160 x 40



Once Weathered

Available in: Portland Grey, Barley and Welsh Slate. Larger sizes are made to order. Please ask in store.



Twice Weathered

Available in: Portland Grey, Barley and Welsh Slate. Larger sizes of Barley and all Welsh Slate are made to order. Please ask in store.

Flat Copings

Choose from either our Meadow or Lakeland range (see pages 57 and 60 for Lakeland and Meadow Walling).



MEADOW SINGLE COPING
600 x 160 x 40

DOUBLE COPING
600 x 280 x 40



LAKELAND FLAT COPING
440 x 150 x 30

Sizes	Unit weight	No. Linear Mtr	Linear Mtr Pack	Unit / pallet	Pallet weight
Once Weathered					
600 x 180 x 65 (h)	14.5	1.66	24.1	40	580
600 x 225 x 70 (h)	24	1.66	24.1	40	960
600 x 300 x 70 (h)	24.5	1.66	12.0	20	490
600 x 355 x 70 (h)	29	1.66	9.6	16	464
600 x 400 x 80 (h)	24	1.66	9.6	16	384
600 x 450 x 75 (h)	38	1.66	9.0	15	570

Sizes	Unit weight	No. Linear Mtr	Linear Mtr Pack	Unit / pallet	Pallet weight
Twice Weathered					
600 x 140 x 50 (h)*	8	1.66	39.8	66	528
600 x 180 x 50 (h)	12	1.66	32.5	54	648
600 x 280 x 50 (h)*	16	1.66	24.1	40	640
600 x 225 x 60 (h)	15	1.66	21.7	36	540
600 x 300 x 70 (h)	23.5	1.66	19.3	32	752
600 x 355 x 70 (h)	29	1.66	15.1	25	725

*Without Drips